



KGT-2500A / 1600H

REVOLUTIONARY PRODUCTIVITY

EMPOWER PACKAGING
COMPETITIVENESS

CORRUGATED PRINTER



www.kingtuprinter.com

Shenzhen Kingt Technology Co.,Ltd

Add: 18th, Xinkang Road, Pinghu Town, Longgang District, Shenzhen, Guangdong, China

Tel: **+86-13823102195**

Email: info@kingtuprinter.com



COMPANY PROFILE

SHENZHEN KINGT TECHNOLOGY CO. LTD. was established in 2009 in Shenzhen. We are a digital inkjet printing solution provider integrating design, R&D, production, sales and service.

As a national high-tech enterprise, Kingt owns a number of industry software, hardware patents and continuous making contribution in leading the industry's technological innovation.

220000m²

PLANT AREA

100+

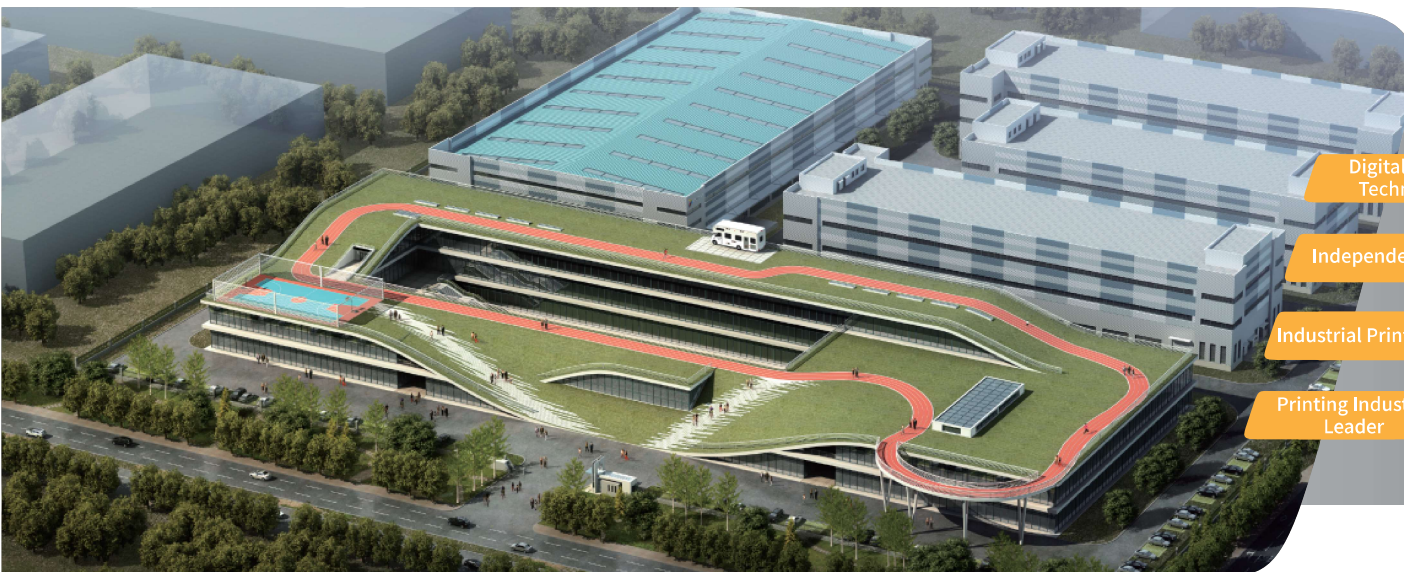
PATENT & SOFTWARE COPYRIGHTS

400+

EMPLOYEES

80+

R&D ENGINEERS



Digital Inkjet Technology

Independent R&D

Industrial Printhead

Printing Industry Leader

MACHING STRENGTH



Assembly Workshop



Precision Machining Center



Annealing



Gantry Milling Center

Implementation of ISO9001 quality management system, environmental management system, occupational health & safety management system.

High-resolution Multi-color durable printhead

EPSON I3200



- Suitable for AQ ink
- Stable and durable
- 600dpi print head resolution (2 rows)
- Multi gray printing with variable ink drop Technology

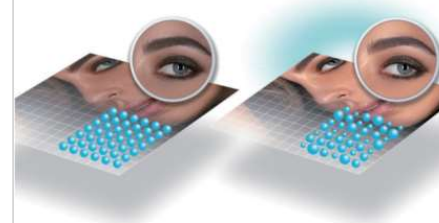


PrecisionCore Technology

The adoption of ALL MEMS (Micro Electro Mechanical System) manufacturing process and the thin-film piezoelectric elements enable high-precision nozzle arrangement (600dpi/2 rows), making print head compact, fast, high-quality, and durable.

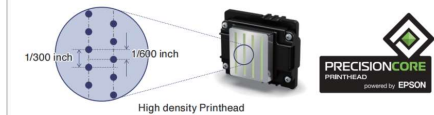
With Epson's unique MEMS technology, the precise nozzles and ink paths, enable the ejected ink droplets close to a perfect circle meanwhile precisely positioned.

Multi-grayscale Output



Epson's VSDT (Variable Droplet Technology) can freely control the size of ink droplets, reducing graininess, presenting more details, smooth color transitions, and high saturation.

High Resolution



High resolution (600dpi/color) enables 4 colors output

High Durability



PrecisionCore printheads are durable due to their high-precision processing technology. It has been optimized for using in numerous commercial and industrial printing fields for high-speed output and high-quality printing.

Original Guarantee



EPSON GENUINE LABEL

Epson recommends purchasing printheads from authorized party.
The original printhead labeled with Epson genuine label.

APPLICATION

Suitable for direct printing of absorbent materials such as yellow / white corrugated cardboard, honeycomb cardboard, kraft paper, coated paper, etc



APPLICATION



Fresh Agricultural Specialties Packaging



Home Appliance Packaging



Digital 3C Packaging



Logistics Transportation Packaging



Food Packaging



Toy & Daily Necessities Packaging

APPLICABLE MATERIAL



Corrugated Cardboard



Coated Paper



Kraft

KGT-2500A

www.kingtuvprinter.com

KGT-2500A

Scanning Digital Corrugated Printer



Up to 1200dpi
Resolution

Up to 1400m²/h
Printing capacity

Intelligent feeding
& maintaince

Print on demands

Easy operation

FEATURES



Automatic Ink Locking

The equipment will automatically lock all the color ink circuit, to solve the problem of ink leakage and waste after shutdown



Save Ink

The automatic cleaning and maintenance system applied to the negative pressure system can reduce the ink waste of conventional pushing ink



Ink Temperature Control

The ink temperature can be controlled to the required appropriate working temperature $\pm 1^{\circ}\text{C}$, to avoid the influence of environmental temperature change ink stability

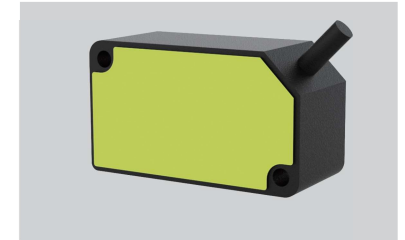


One-key Maintenance

One-key automatic non-contact cleaning print head, fully sealed automatic print head moisturizing, long moisturizing protects the print heads to extend the service life

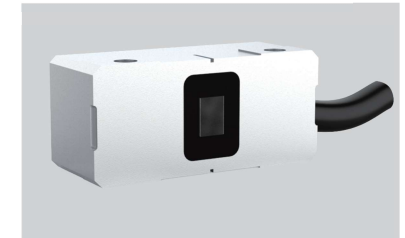
High-precision Laser Eye

The high-frequency laser ranging sensor and ranging module can obtain accurate distance information in different environments after rigorous temperature, ambient light and linear compensation tests.



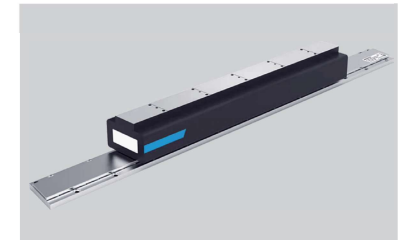
High Precision Encoder Strip Reader

Large detection range, high detection accuracy, fast response speed, suitable for various harsh and complex environments, high anti-interference performance, good stability and longer service life



High-precision X-axis Linear Motor

Provide optimal control of X-axis movement; Ensure accurate mechanical transmission and durability



High-precision Y-axis Servo Motor

Auto correct the movement of the Y-axis, when the beam movement deviates, it can correct the printing starting points on both sides automatically.



Parameters and Configuration

Category	Item	Parameters and instructions
Basic information	Brand	KINGT®
	Model	KGT-2500A
	Applications	Kraft, white cardboard, personalized production and so on.
Print head	Model	Epson I3200
	Configuration	8H, 4 color(C/M/Y/K), print width 264mm
	Printing Mode	1PASS or 2 PASS optional
Capacity	8H	1PASS 700m ² /h 2PASS 350m ² /h (including feeding)(production capacity depends on the printing pattern)
Configuration parameters	Media Information	Maximum printing width: 2500mm;Maximum Auto feeding length: 1450mm; Thickness: 2-30mm
	RIP Resolution	600*360dpi
	Loading and unloading method	Assembly line
	Traceability code printing (Reserve function)	Continuously variable QR code, bar code, etc. can be printed according to customer requirements
	Movement System	Linear motor, high-precision servo system
	Part number management (Reserve function)	Part number queue management system, Automatic switching (JQM function)
	Drying	Hot air drying (optional)
	Feeding Method	Belt and vacuum suction paper feeding
	Other Functions	Ink cost statistics function, Production management system
	Software	PrintFactory
	Input Format	PDF, JPEG, TIFF, AI etc.
	Working space (minimum)	7100 mm (L) x6800 mm (W) x 2500 mm (H)
	Power and Electricity	Three-phase 380V, 50 HZ, total power 15kw
	Air Requirements	Pressure: ≥ 6kg/cm2 Flow rate ≥34 liters/min
	Environmental Requirements	Relative humidity: 40%-60%; Temperature: 22°C-30°C
	Printer Dimensions	4720 mm (W) x 3500 mm (feed direction) x 1800 mm (H)
Net Weight	3600kg	

Parameters and Configuration

Category	Item	Parameters and instructions
Basic information	Brand	KINGT®
	Model	KGT-2500A+
	Applications	Kraft, white cardboard, personalized production and so on.
Print head	Model	Epson I3200
	Configuration	2x8H, 4 color(C/M/Y/K), Print width 259mm
	Printing Mode	1PASS or 2 PASS optional
Capacity	2x8H	1PASS 700m ² /h 2PASS 350m ² /h (including feeding) (production capacity depends on the printing pattern)
Configuration parameters	Media Information	Maximum printing width: 2500mm;Maximum Auto feeding length: 1450mm; Thickness: 2-30mm
	RIP Resolution	1200*360dpi
	Loading and unloading method	Assembly line
	Traceability code printing (Reserve function)	Continuously variable QR code, bar code, etc. can be printed according to customer requirements
	Movement System	Linear motor, high-precision servo system
	Part number management (Reserve function)	Part number queue management system, Automatic switching (JQM function)
	Drying	Hot air drying (optional)
	Feeding Method	Leading edge feeder
	Other Functions	Ink cost statistics function, Production management system
	Software	PrintFactory
	Input Format	PDF, JPEG, TIFF, AI etc.
	Working space (minimum)	7100 mm (L) x6800 mm (W) x 2500 mm (H)
	Power and Electricity	Three-phase 380V, 50 HZ, total power 15kw
	Air Requirements	Pressure: ≥ 6kg/cm2 Flow rate ≥34 liters/min
	Environmental Requirements	Relative humidity: 40%-60%; Temperature: 22°C-30°C
	Printer Dimensions	4720 mm (W) x 3500 mm (feed direction) x 1800 mm (H)
Net Weight	3600kg	

Parameters and Configuration

Category	Item	Parameters and instructions
Basic information	Brand	KINGT®
	Model	KGT-2500 pro
	Applications	Kraft, white cardboard, personalized production and so on.
Print head	Model	Epson I3200
	Configuration	12H, 4 color(C/M/Y/K), Inkjet width 396mm
	Printing Mode	1PASS or 2 PASS optional
Capacity	12H	1PASS 1000m ² /h 2PASS 500m ² /h (including feeding) (production capacity depends on the printing pattern)
Configuration parameters	Media Information	Maximum printing width: 2500mm;Maximum Auto feeding length: 1450mm; Thickness: 2-30mm
	RIP Resolution	600*360dpi
	Loading and unloading method	Assembly line
	Traceability code printing (Reserve function)	Continuously variable QR code, bar code, etc. can be printed according to customer requirements
	Movement System	Linear motor, high-precision servo system
	Part number management (Reserve function)	Part number queue management system, Automatic switching (JQM function)
	Drying	Hot air drying (optional)
	Feeding Method	Leading edge feeder
	Other Functions	Ink cost statistics function, Production management system
	Software	PrintFactory
	Input Format	PDF, JPEG, TIFF, AI etc.
	Working space (minimum)	7100 mm (L) x6800 mm (W) x 2500 mm (H)
	Power and Electricity	Three-phase 380V, 50 HZ, total power 15kw
	Air Requirements	Pressure: ≥ 6kg/cm ² Flow rate ≥34 liters/min
	Environmental Requirements	Relative humidity: 40%-60%; Temperature: 22°C-30°C
	Printer Dimensions	4720 mm (W) x 3500 mm (feed direction) x 1800 mm (H)
	Net Weight	3600kg

Parameters and Configuration

Category	Item	Parameters and instructions
Basic information	Brand	KINGT®
	Model	KGT-2500A++
	Applications	Kraft, white cardboard, personalized production and so on.
Print head	Model	Epson I3200
	Configuration	16H, 4 Colors(C/M / Y / K), Inkjet width 528 mm
	Printing Mode	1PASS or 2 PASS optional
Capacity	16H	1PASS 1400m ² /h, 2PASS 700m ² /h (including feed) (production capacity depends on the printing pattern)
Configuration parameters	Media Information	Maximum printing width: 2500mm;Maximum Auto feeding length: 1450mm; Thickness: 2-30mm
	RIP Resolution	600*360dpi
	Loading and unloading method	Assembly line
	Traceability code printing (Reserve function)	Continuously variable QR code, bar code, etc. can be printed according to customer requirements
	Movement System	Linear motor, high-precision servo system
	Part number management (Reserve function)	Part number queue management system, Automatic switching (JQM function)
	Drying	Hot air drying (optional)
	Feeding Method	Leading edge feeder
	Other Functions	Ink cost statistics function, Production management system
	Software	PrintFactory
	Input Format	PDF, JPEG, TIFF, AI etc.
	Working space (minimum)	7100 mm (L) x6800 mm (W) x 2500 mm (H)
	Power and Electricity	Three-phase 380V, 50 HZ, total power 15kw
	Air Requirements	Pressure: ≥ 6kg/cm ² Flow rate ≥34 liters/min
	Environmental Requirements	Relative humidity: 40%-60%; Temperature: 22°C-30°C
	Printer Dimensions	4720 mm (W) x 3500 mm (feed direction) x 1800 mm (H)
	Net Weight	3600kg

KGT-1600H

www.kingtuvprinter.com

KGT-1600H

Single Pass High Speed
Digital Corrugated Printer



● Up to 1200dpi
Resolution

● Up to 80m/min
Printing speed

● Max 1600mm
Paper width
(could be customized)

● $\pm 1^{\circ}\text{C}$
Ink cartridge
temperature control

● $\leq 1\text{mm}$
Cardboard positioning
deviation

FEATURES



Inlet Control Panel System

 Upgrade
  Quality
  Efficient
  Stabilization

- Control the orderly operation of the printing system
- Image-grade print quality
- Long service life, stability and reliability
- High output color precision, delicate picture, low error rate

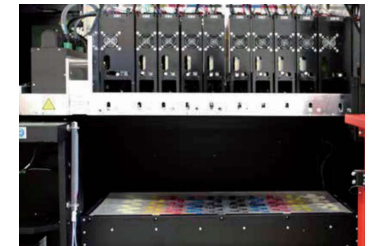
Variable Code Printing

Continuously variable QR code, bar code, etc. can be printed according to customer requirements



Automatic Maintenance

Alarm for ink shortage and ink spill, automatic moisturizing, contact-less automatic cleaning and maintenance



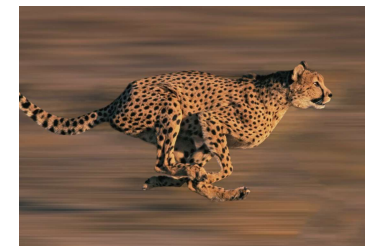
Ultra-clear Printing

Adopted EPSON I3200A1 print head, 600dpi physical resolution, printing resolution up to 1200dpi



High-speed Production Capacity

High ignition frequency, 600dpi line speed up to 80m/min



KGT-1600H

Single Pass High Speed Digital Corrugated Printer





Machine Model	KGT-1600H
Number of print heads	24 pcs
Print Head	Epson I3200
Ink Type	Special water-based dye ink, Special water-based pigment ink
Ink Color	CMYK
Printing Resolution	600*600dpi / 600*1200dpi
Printing Speed	30-80m/min
Printing Width	800mm (24H)
Material Thickness	1.5-20mm
Media Size	Paper width 400-1600mm, Automatic paper feeding 400-2400mm
Feeding Method	Leading edge feed, Automatic feeding
Ink Supply Method	Automatic continuous ink supply
Environmental Requirements	Temperature: 25°C-30°C, Relative humidity: 40%-60%
Operating System	PrintFactory RIP software, Win10 (up) 64-bit
Power Supply	AC380V, 50-60Hz, total power 27KW
Net Weight	4000Kg
Printer Dimensions	4300 mm (W) x 5050 mm (feed direction) x 1800 mm (H)

KGT-1600H+

Single Pass High Speed Digital Corrugated Printer



Machine Model	KGT-1600H+
Number of print heads	48 pcs
Print Head	Epson I3200
Ink Type	Special water-based dye ink, Special water-based pigment ink
Ink Color	CMYK
Printing Resolution	1200*1200dpi
Printing Speed	30-80m/min
Printing Width	800mm (24H)
Material Thickness	1.5-20mm
Media Size	Paper width 400-1600mm, Automatic paper feeding 400-2400mm
Feeding Method	Leading edge feed, Automatic feeding
Ink Supply Method	Automatic continuous ink supply
Environmental Requirements	Temperature: 25°C-30°C, Relative humidity: 40%-60%
Operating System	PrintFactory RIP software, Win10 (up) 64-bit
Power Supply	AC380V, 50-60Hz, total power 27KW
Net Weight	4000Kg
Printer Dimensions	4300 mm (W) x 5050 mm (feed direction) x 1800 mm (H)

Pre-sale process certification

- 
Free consultation
 Provide free technical consulting services for customers
- 
Free sampling
 Provide free proofing services with the pictures or materials sent by customers.
- 
Door-to-door inspecting
 Invite customers to visit the company to investigate the machine manufacturing process.
- 
Confirm the process
 Technicians shall confirm the final printing process according to the customer requirements.







Exclusive solution for sale

- 
Training on machine
 Make plans for customers getting free training on operation.
- 
Process solution
 Provide free technology solution to help customers increase the added value of their products.
- 
Plant requirement planning
 Professional technical to assist and guide the site planning and power distribution capacity planning.



After-sales service commitment



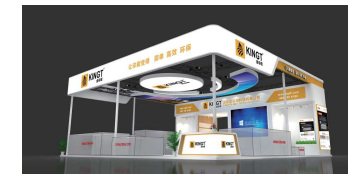
- 
Troubleshooting
 Service promised, after-sales engineers to troubleshooting faults and resume normal production at the fastest time.
- 
Service Tracking
 Regularly follow up customers, get to know about the equipment usage, listen to customer's advise and give technical guidance while keeping records.
- 
Service Consulting
 Professional engineer after-sales service team
- 
Service Guarantee
 Check with local distributor



OUR EQUIPMENT ARE SOLD BOTH AT HOME AND ABROAD

MORE THAN

Dedicated the service to the world
Create our future together



As a digital inkjet printing equipment enterprise, KINGT is integrating independent research and development, design, production, sales and service.

The main sales models are Lable press, UV flatbed printers, KGT-C180 Cylindrical inkjet printer, Corrugated printers and Textile printers series;

Through these efforts, KINGT has also broadened the road to the world field of inkjet color printing and has made great achievements in many countries and industries;

By 2022, it has participated in more than 100 international exhibitions.

From 2010 to 2022, KINGT led the annual global printer equipment sales; maintained the existing market for digital inkjet printing and promoted the rapid development of blank fields in other countries to provide better solutions and services.